

Agilent VEE Pro 7.0

Better Tests, Faster



*At Agilent, our tools and technologies
help you focus on your tasks,
not on your connections.*

*Agilent VEE Pro is a powerful, productive,
easy to use, graphical programming
environment designed to save you time
in building and programming test systems.*

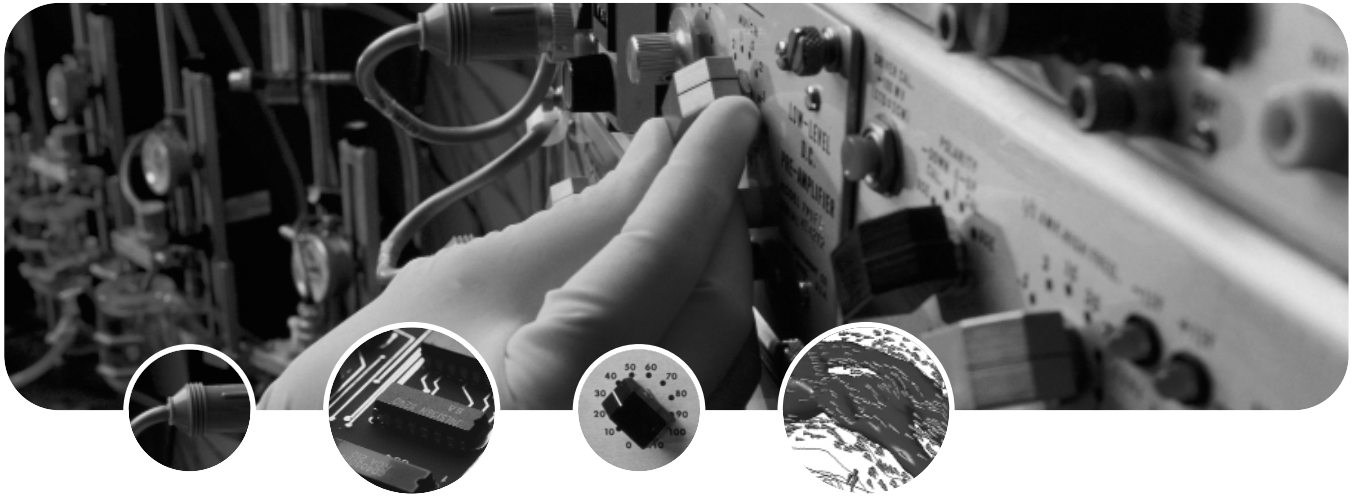
*Agilent VEE Pro is the fastest path from
measurement to analysis in existence today.*

It's Easy

Agilent VEE Pro is an award-winning, uniquely productive, graphical programming environment. To create a program, you choose high-level graphical objects from the menu and connect them with wires (no more low-level icons to represent each textual line of code). The wire connections help specify functionality and sequences in intuitive block diagrams. You program at a higher, task-oriented level using built-in scientific and engineering routines. The program is self documenting: Agilent VEE Pro illustrates the connections between individual objects. Even as programmers move on, their programs are easily understood by others. Plus, with its built-in tutorials and multiple sample programs, demos and context-sensitive help, Agilent VEE Pro jumpstarts the programming effort and keeps it running smoothly for beginning and veteran programmers alike. If you ever get stuck, you have the confidence that comes with 6 months of included support. There is also an active user's forum that shares best practices and helps other users with common questions.



Agilent Technologies



Agilent VEE Pro 7.0 adds additional capabilities to make it even easier to edit your program, UNDO mistakes, and connect to other programs and utilities.

It's Smart

Agilent VEE Pro is designed for productive instrument programming. It can talk to any instrument from any vendor using GPIB, LAN, USB, RS-232, VXI and other common backplanes and protocols. Agilent VEE Pro includes nearly a thousand drivers representing the most popular instruments from 70 different vendors. Additional drivers are available via web access. Agilent VEE Pro can control any standard instrument and many vendor's PC plug-in cards with a driver, a vendor-supplied DLL, or via Agilent VEE Pro's easy and powerful Direct IO capability. Instrument addresses and other parameters can be verified at runtime and changed on the fly, without reconfiguring programs. Agilent VEE Pro automatically handles different data types, providing automatic conversion and giving you powerful data handling capabilities with a minimum of complex programming.

Agilent VEE Pro's compiler generates optimized code that can be further enhanced with its built-in Profiler. The Profiler allows you to quickly analyze critical sections of code to save development time when fine-tuning your programs.

Agilent VEE Pro comes standard with a RunTime execution engine that provides the ability to distribute run-only Agilent VEE Pro applications at no extra charge.

It's Open

Agilent VEE Pro interacts with the world. It interfaces with popular office tools: use Microsoft® Word for reports, Excel for spreadsheets, Outlook for paging and e-mail, and Access for database operations. Agilent VEE Pro integrates the .NET Framework and ActiveX, simplifying common tasks and making powerful system capabilities available to your programs. Now it is easy to complete tasks such as programmatically managing files, sending an email report, or invoking a web page.

With the included Active X Automation Server, other programs can call VEE Pro user functions. Agilent VEE Pro accepts data from virtually any vendors' Instruments, PC cards, and sensors. It supports all popular programming languages including Visual Basic, C/C++, Visual C#, all .NET compliant languages and National Instruments' LabVIEW.

It works with surface-mount machines, robots and other manufacturing equipment via the .NET Framework or ActiveX libraries supplied by the manufacturer. And it can be used as a standalone solution or included in a custom in-house solution.

A wide variety of graphic formats are supported including JPEG, BMP, GIF, WMF and PNG.

Agilent VEE Pro programs can be monitored and diagnosed remotely via the web or network.



It's Standards-Friendly

Agilent VEE Pro supports industry-standard instrument drivers including IVI-COM and VXI *plug&play* as well as a variety of legacy drivers. If an industry-standard driver is not available, use the .dll library supplied with many instruments and PC Cards.

In addition to GPIB connectivity, Agilent VEE Pro allows you to connect directly to LAN and USB-enabled instruments using industry-standard protocols. VXI, PC plug-ins and other backplanes can be controlled from Agilent VEE Pro.

The open development environment of Agilent VEE Pro allows you to easily use other applications and tools. With access to .NET classes and assemblies, Agilent VEE Pro can programmatically perform everyday tasks and interact with other applications. The .NET Framework (Common Language Runtime and Framework Class Libraries) is installed with Agilent VEE Pro so it is instantly available. Support of ActiveX, DLLs, and other tools ensure access to the capabilities you need.

It's Connected

MATLAB® Script and The MathWorks Signal Processing Toolbox as well as the Microsoft .NET Framework Library are embedded in Agilent VEE Pro, included at no extra cost.

With MATLAB Script and The MathWorks Signal Processing Toolbox embedded in Agilent VEE Pro, you get 500 of the most popular MATLAB analysis and visualization functions preprogrammed as one-click objects in Agilent VEE Pro. Without leaving Agilent VEE Pro, you can instantly transform your measurement data into usable information. Built-in MATLAB functions include:

- Numeric computation
- Engineering & scientific graphics (2D, 3D, waterfall, bar, pie)
- Signal processing

It's Essential

With Agilent VEE Pro, you can do your job better, faster, and more productively. It's an essential productivity tool for programmers worldwide, and the quickest, easiest way to get measurement analysis results. But don't take our word for it. Download your free, full-capability 30-day evaluation copy of Agilent VEE Pro at www.agilent.com/find/vee and see it in action.

It's Included

There's no need to buy expensive add-ons or choose between versions to get the capabilities you need. Agilent VEE Pro includes all the capabilities and support you need to be successful including:

- Built-in MATLAB Script and Signal Processing Toolbox
- Microsoft .NET Framework
- Unlimited runtime distribution of your Agilent VEE Pro applications
- 6 months support and product updates included (Faculty product not included)
- Versions with German or Japanese localized documentation available

Minimum System Requirements for Agilent VEE Pro

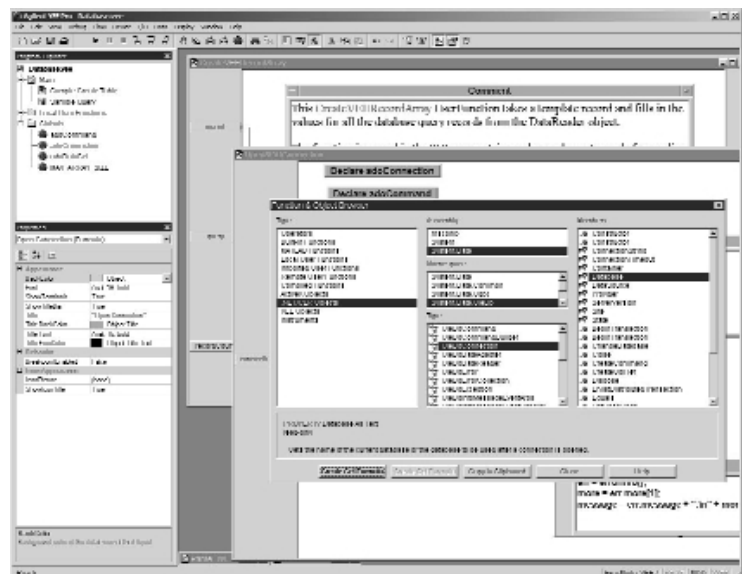
Software requirements

- Microsoft Windows® 98 SE, Windows ME, Windows NT 4.0 with service pack 6a, Windows 2000 with service pack 4, or Windows XP with service pack 1

PC Hardware requirements

- Pentium® 133 MHz processor; 266 MHz Pentium II or higher recommended
- 32 MB RAM with Windows 98, 64 MB RAM with Windows NT 4.0/2000/XP, 96 MB recommended
- 850 MB Hard disk free space:
- CD-ROM drive
- Super VGA (800x600) display or higher-resolution monitor with 256 colors or more
- PC keyboard and 2-button mouse (3rd button, if present, is not used)
- One of the following physical connectivity options is required for the PC-to-instrument connection:
 - Agilent 82357A USB/GPIB Interface
 - Agilent E5810A or E2050A/B LAN/GPIB gateway
 - Agilent 82350A/B or 82341C GPIB interfaces
 - USB connect to instruments supporting the TMC protocol
 - Standard RS-232
 - LAN connect to instruments supporting the VXI-11 protocol
 - National Instruments I/O hardware using NI 488 version 1.5 (or higher)

Free VEE Pro Evaluation Copy (order a free CD or download at www.agilent.com/find/vee)



Ordering Information

www.agilent.com/find/vee

Agilent VEE Pro is available with German or Japanese localized documentation.

All Agilent VEE Pro products ship with embedded MATLAB Script, The MathWorks' Signal Processing Toolbox, .NET Framework and ActiveX programmatic access at no extra charge. In addition Agilent VEE Pro products ship with unlimited Runtime distribution rights. The full MATLAB product can be purchased from The MathWorks at www.mathworks.com or 508 647-7000.

Updated or new instrument drivers can be downloaded free of charge from the Agilent Developer Network website (requires free registration): www.agilent.com/find/adn

The Agilent Developer Network site also provides example programs, technical notes, and a variety of other resources.

Worldwide Service and Support

With Agilent VEE Pro, you have access to Agilent's worldwide resources for start-up assistance, training classes, and update services. As part of the purchase of any Agilent VEE Pro product you will receive 6 months of support and product updates included, free of charge. Additional consulting services are available from Agilent. There are currently over 30 companies available in North America, Europe, Middle East and Asia to help you develop your Agilent VEE Pro solution.

Join the Agilent VEE Pro electronic users group. Sign up through the Agilent VEE Pro web site or see www.agilent.com/find/vrf and get assistance on using Agilent VEE Pro from experts around the world.

To order Agilent VEE Pro — refer to product W1140A.

note: all products listed below are under the W1140A as options so there is not a separate product number for each.

Product Description	Notes
VEE Pro Software with Support	Includes VEE product and 6 months of support and product updates
Test Developers Bundle with VEE, Toolkit	A cost effective way to get all of Agilent's test development software. Includes VEE, T&M Toolkit for Visual Studio .NET and 6 months of support and updates
<i>For additional information on these and other SW products — please visit: www.agilent.com/find/connectivity</i>	
Faculty version VEE - qty. 50 licenses (for approved faculty members only)	Includes 3 sets of media and manuals with the license to copy up to 50 licenses, no support

Available Options Description	Notes
Support	Additional support purchased at any time (12 month minimum)
Hardware	Buy HW with your software and it includes a bundle discount
82357A USB/GPIB Interface	
82350B GPIB Interface	
<i>For additional information on these hardware connectivity products – please visit: www.agilent.com/find/gpib</i>	

Available upgrade products Description	Notes
Upgrade from VEE 5 and earlier	Includes media and manuals, support and product updates for 6 months
Upgrade from VEE 6 and later	Includes media, manuals, support and product updates for 6 months
Upgrade from VEE OneLab to VEE Pro	Includes media, manuals, support and product updates for 6 months

*For additional ordering and for pricing assistance please refer to:
www.agilent.com/find/connectivity*

Authorized Agilent VEE Pro Partners



Amplicon Liveline is a specialist supplier of IT and instrumentation to industry. Offering a complete range of PC plug-in cards for data acquisition, serial and GPIB communications, industrial rack mounted PCs and single board computers. PC hardware solutions are available from 16 different suppliers to ensure that Amplicon can meet the varied demands from industry, higher education and research and development. All products offer support for Agilent VEE Pro and are presented in a 408-page color catalog with full pricing and technical details. Brighton, United Kingdom +44 (0) 1273 570220
www.amplicon.co.uk



Meilhaus Electronic data acquisition products cover a range of hardware and software products for standard applications as well as for highly sophisticated test, measurement and control systems based on a PC platform. Products include data acquisition cards for PCI and PCMCIA bus, IEEE488 cards, GPIB/LAN gateway, sensor modules, intelligent sensor interfaces, and system integration services. Puchheim, Germany +49 \ 89 01 660
www.meilhaus.de

See www.agilent.com/find/vee for the latest list of channel partners.

Agilent Technologies' Test and Measurement Support, Services, and Assistance

Agilent Technologies aims to maximize the value you receive, while minimizing your risk and problems. We strive to ensure that you get the test and measurement capabilities you paid for and obtain the support you need. Our extensive support resources and services can help you choose the right Agilent products for your applications and apply them successfully. Every software instrument and system we sell has a global warranty. Support is available for at least five years beyond the production life of the product. Two concepts underlie Agilent's overall support policy: "Our Promise" and "Your Advantage."

Our Promise

Our Promise means your Agilent test and measurement equipment will meet its advertised performance and functionality. When you are choosing new equipment, we will help you with product information, including realistic performance specifications and practical recommendations from experienced test engineers. When you use Agilent equipment, we can verify that it works properly, help with product operation, and provide basic measurement assistance for the use of specified capabilities, at no extra cost upon request. When you use Agilent software, we can help you get started with installation, licensing, and documentation/terminology clarification as part of your purchase of the product. Many self-help tools are available for your convenience. We offer products that have built in support, updates and upgrades, so you don't have to worry about ordering a separate product number.

Your Advantage

Your Advantage means that Agilent offers a wide range of additional expert test and measurement services, which you can purchase according to your unique technical and business needs. Solve problems efficiently and gain a competitive edge by contracting with us for calibration, extra-cost upgrades, out-of-warranty repairs, and on-site education and training, as well as design, system integration, project management, and other professional engineering services. Experienced Agilent engineers and technicians worldwide can help you maximize your productivity, optimize the return on investment of your Agilent instruments and systems, and obtain dependable measurement accuracy for the life of those products.



Agilent Email Updates

www.agilent.com/find/emailupdates

Get the latest information on the products and applications you select.

Agilent T&M Software and Connectivity

Agilent's Test and Measurement software and connectivity products, solutions and developer network allows you to take time out of connecting your instruments to your computer with tools based on PC standards, so you can focus on your tasks, not on your connections. Visit www.agilent.com/find/connectivity for more information.

By internet, phone, or fax, get assistance with all your test & measurement needs

Online assistance:

www.agilent.com/find/assist

Phone or Fax

United States:

(tel) 1 800 829 4444

Canada:

(tel) 1 877 894 4414

(fax) (905) 282 6495

China:

(tel) 800 810 0189

(fax) 800 820 2816

Europe:

(tel) (31 20) 547 2323

(fax) (31 20) 547 2390

Japan:

(tel) (81) 426 56 7832

(fax) (81) 426 56 7840

Korea:

(tel) (82 2) 2004 5004

(fax) (82 2) 2004 5115

Latin America:

(tel) (305) 269 7500

(fax) (305) 269 7599

Taiwan:

(tel) 0800 047 866

(fax) 0800 286 331

Other Asia Pacific Countries:

(tel) (65) 6375 8100

(fax) (65) 6836 0252

(e-mail) tm_asia@agilent.com

Microsoft and Windows are U.S. registered trademarks of Microsoft Corporation.

MATLAB is a U.S. registered trademark of The MathWorks, Inc.

Pentium is a U.S. registered trademark of Intel Corporation.

Product specifications and descriptions in this document subject to change without notice.

© Agilent Technologies, Inc. 2004

Printed in the USA January 28, 2004

5988-6302EN



Agilent Technologies