

What's New in HP VEE

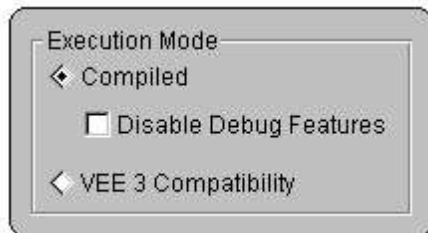
Thank you for using HP VEE. Many new features appear in this version; the most prominent being speed enhancements and expanded development environment. We'll introduce you to compatibility issues with your existing programs, and how these new features can help you make better tests faster.

The HP VEE World Wide Web site contains support information, instructions for downloading instrument drivers, and many other helpful resources. Please visit us at <http://www.hp.com/go/hpvee>, then bookmark our URL in your list of favorite locations.

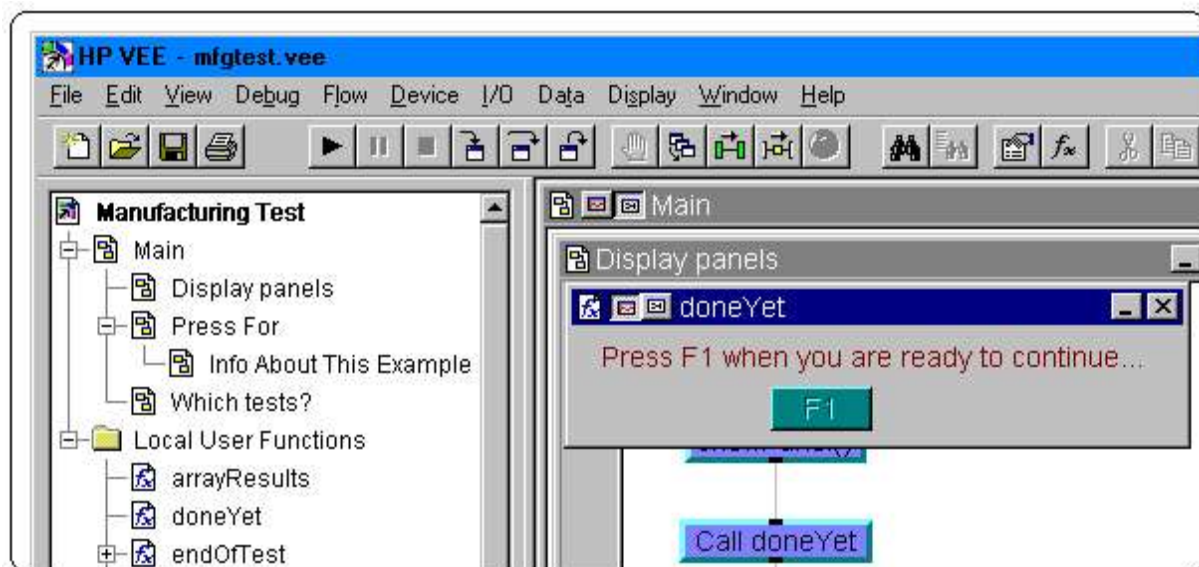
Note

If you save your existing program in this new version of HP VEE, you will not be able to open it in any previously-released version of HP VEE. The save file format has changed.

Speed Enhancements The biggest change to HP VEE is the new execution engine. Look here for information on the changes you may have to make to your programs so they can run in the Compiled mode.



Work Space Appearance and Operation These features help to increase productivity and satisfaction when you are creating and working with large HP VEE programs.

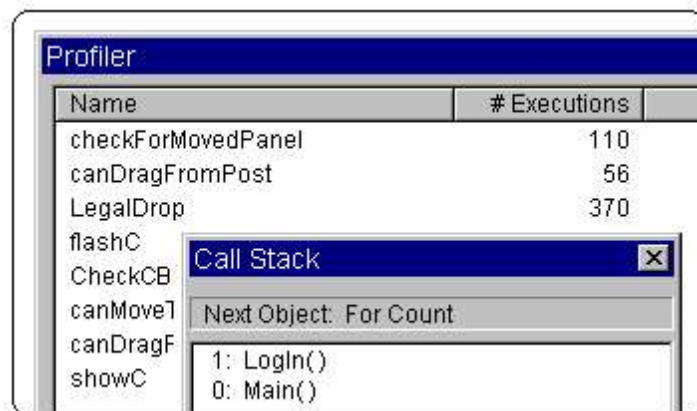


Instrument Manager A new way to configure and access instrument control objects is located under I/O ==> Instrument Manager. This will be the method used for all types of Instrument I/O

(including *VXIplug&play*). This new Instrument Manager also lets you find the instruments and interfaces that are currently connected to your computer.



Debugging and Other Enhancements These features help when you re debugging your programs, and increase functionality.



Callable VEE and the HP VEE ActiveX Control The Callable VEE API is a simple ANSI C library that lets you link HP VEE 4.0 user functions into existing C/C++ applications. The new HP VEE 4.0 ActiveX Control lets you link HP VEE 4.0 user functions into Visual Basic or any other OLE 2.0-compliant application.