

---

Read This First Before  
Installing HP VEE  
RunOnly for HP-UX

— |

| —

— |

| —

# Notice

The information contained in this document is subject to change without notice.

Hewlett-Packard Company (HP) shall not be liable for any errors contained in this document. *HP makes no warranties of any kind with regard to this document, whether express or implied. HP specifically disclaims the implied warranties of merchantability and fitness for a particular purpose.* HP shall not be liable for any direct, indirect, special, incidental, or consequential damages, whether based on contract, tort, or any other legal theory, in connection with the furnishing of this document or the use of the information in this document.

## Warranty Information

A copy of the specific warranty terms applicable to your Hewlett-Packard product can be obtained from your local Sales and Service Office.

## Restricted Rights Legend

Use, duplication or disclosure by the U.S. Government is subject to restrictions as set forth in subparagraph (c)(1)(ii) of the Rights in Technical Data and Computer Software clause in DFARS 252.227-7013.

Hewlett-Packard Company  
3000 Hanover Street  
Palo Alto, CA 94304 U.S.A.

Rights for non-DOD U.S. Government Departments and Agencies are as set forth in FAR 52.227-19(c)(1,2).

## Printing History

Edition 1 - December 1991

Edition 2 - December 1992

Edition 3 - February 1995

© Copyright 1991, 1992, 1995 Hewlett-Packard Company. All rights reserved.

This document contains information which is protected by copyright. All rights are reserved. Reproduction, adaptation, or translation without prior written permission is prohibited, except as allowed under the copyright laws.

Windows or MS Windows is a U.S. trademark of Microsoft Corp.

---

# Contents

<b>1. What is HP VEE RunOnly?</b>	
<b>2. Installing HP VEE RunOnly for HP-UX</b>	
Differences for Installing HP VEE RunOnly . . . . .	2-3
System Requirements . . . . .	2-3
Installing the Software . . . . .	2-3
Configuring HP VEE . . . . .	2-4
The .veeio File . . . . .	2-4
Verifying the Installation . . . . .	2-5
<b>3. Developing Programs for HP VEE RunOnly</b>	

## Contents

---

What is HP VEE RunOnly?

---

## What is HP VEE RunOnly?

HP VEE RunOnly for HP-UX is a run-only version of HP VEE, a visual engineering environment available for the HP-UX, SunOS, and MS Windows operating systems. You can run HP VEE RunOnly for HP-UX either from HP VUE or from X11 Windows.

HP VEE RunOnly for HP-UX is *not* a development environment. You must create your programs using one of the following HP VEE products: HP VEE for HP-UX, HP VEE for Windows, or HP VEE for SunOS.

Once you have developed an HP VEE program, you can run the program under HP VEE RunOnly. The program can communicate with instruments, HP BASIC/UX, C, and other HP-UX languages. However, you cannot modify or save the program from HP VEE RunOnly, and only the “panel” view can be seen.

The purpose of HP VEE RunOnly is to provide a secure, run-only environment in which end users can run programs developed with HP VEE. For example, a manufacturing engineer might develop a process-control program using HP VEE. That program can then be run on the factory floor using HP VEE RunOnly. The end-user (for example, a technician) can make use of the program for its intended purpose, but cannot save the program or modify it.

The name of the executable file for HP VEE RunOnly is “veerun”, and the syntax is:

**veerun** [*options*] [*filename*]

For a complete discussion of the veerun options, refer to the man page VEERUN(1).



---

## Installing HP VEE RunOnly for HP-UX

---

## Installing HP VEE RunOnly for HP-UX

The procedure for installing HP VEE RunOnly for HP-UX is almost the same as for installing HP VEE for HP-UX. Follow the procedures described in the manual *Installing HP VEE for HP-UX* (also included with the RunOnly product), but note the differences cited in the following sections.

---

## Differences for Installing HP VEE RunOnly

Read the following sections, note the differences for installing HP VEE RunOnly, and then install and configure the software as described in *Installing HP VEE for HP-UX*.

---

## System Requirements

The system requirements for installing HP VEE RunOnly are the same as described in Chapter 1 of *Installing HP VEE for HP-UX*, except that only 30 MB of free file system space is required.

---

## Installing the Software

Use the `/etc/update` program to install HP VEE RunOnly, following the procedure described under “Installing from Tape” in Chapter 1 of *Installing HP VEE for HP-UX*. However, substitute **VEERUN** for **VEETEST** in the command:

```
/etc/update -s source_device VEERUN
```

---

## Configuring HP VEE

To configure HP VEE RunOnly, follow the instructions given in the Chapter 2 of *Installing HP VEE for HP-UX*. Depending on your system, follow either the instructions under “Configuring HP VEE for Series 700 and Model V/743” or “Configuring HP VEE for Series 300 and Model V/382.”

The configuration procedure is the same as described in the installation manual. However, substitute “HP VEE RunOnly” for “HP VEE” and substitute **veerun** for **veetest**. For example, to run the device file configuration program for Series 300/400 and Model V/382, execute:

```
/usr/lib/veerun/vee_config
```

---

## The .veeio File

The default **.veeio** file for HP VEE RunOnly is found at **/usr/lib/veerun/config/d.veeio** and can be used as described in Chapter 3 of *Installing HP VEE for HP-UX*.

---

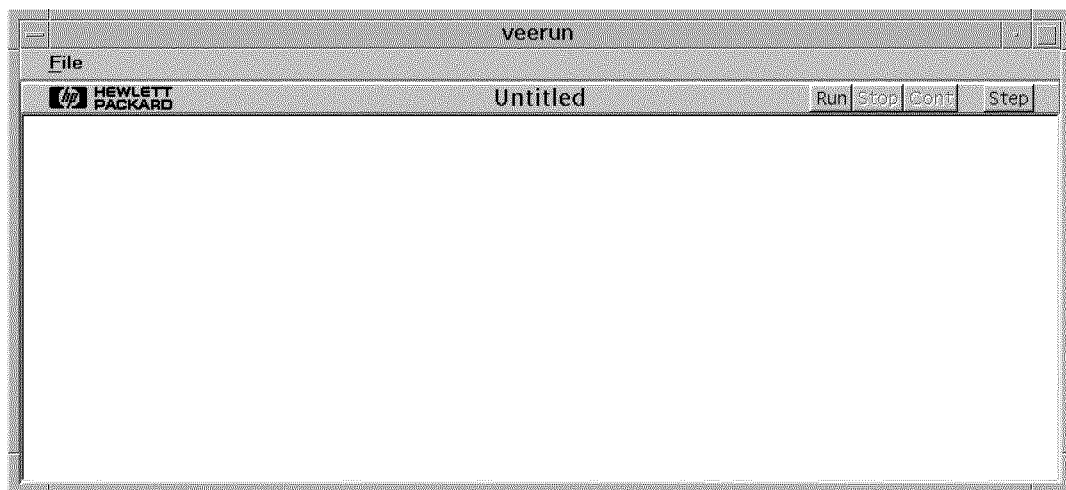
## Verifying the Installation

When you have finished installing and configuring HP VEE RunOnly for HP-UX, you can verify the installation as follows.

1. Log into HP-UX, and start X11 or HP VUE if they are not already running.
2. At the prompt in an active X11 or HP VUE window, type:

**veerun**

Within several seconds, you'll see the HP VEE RunOnly window open, as shown below:



Note that HP VEE RunOnly provides only the **File** pull-down menu. To load a program, use **File**  $\Rightarrow$  **Open**. To exit HP VEE, use **File**  $\Rightarrow$  **Exit**.

Installing HP VEE RunOnly for HP-UX

---

---

## Developing Programs for HP VEE RunOnly

---

## Developing Programs for HP VEE RunOnly

This chapter gives some tips for using HP VEE for HP-UX (or HP VEE for Windows or HP VEE for SunOS) to develop programs to run in the HP VEE RunOnly environment.

- *Make all modifications to your program and debug it in the HP VEE environment.* Once you have transferred the program to the run-only environment, you won't be able to change it.
- *Develop the program with a panel view designed for the appropriate window size.* You may be running HP VEE on a workstation with a high-resolution monitor. You can use the full capabilities of that monitor in developing the detail view. However, the panel view must be developed to fit on the display that your run-only systems will use. For example, if your run-only systems use 640-by-480 pixel VGA monitors, the panel view must fit within that space.
- *Provide a means of stopping the program from the panel view.* If you start a program in the run-only environment with the **-r** option, there will be no tool bar, hence, no **Stop** button. The operator can stop the program by pressing **(Ctrl)+(C)**, but it is a good practice to provide a button in the panel view to stop the program.
- *Transport your .veeio file to the HP VEE RunOnly environment.* When you transport your program to the HP VEE RunOnly environment, include your **.veeio** file. Put it in the **\$HOME** directory of each user on every system that will run your program. For example, if you have two users at **/users/ed** and **/users/sue**, put your **.veeio** file in both of those directories. If Sue logs in and there is not a **.veeio** file in **/users/sue**, the **veerun** program will create a default **.veeio** file in that directory, and your program may not run correctly.
- *Also, transport your .veerc file.* This file includes color and font changes made with **Edit Default Preferences**, along with other preference information. If you want to include this information in the run-only environment, put this file in the **\$HOME** directory of each user on every system that will run your program.



- *In some cases, you may want to secure your program.* You don't have to secure your program since HP VEE RunOnly shows only the panel view and does not let the user save the program or modify its functionality. However, it is possible for the user to alter what is seen on the screen. For example, the user can move objects, change their size, or remove them from the panel view when the program is not running. This has no effect on how the program functions, and the changes cannot be saved. But you can prevent this entirely if you secure your program before transferring it to the run-only environment. (However, don't secure your only copy — you cannot “unsecure” a program once it is secured and saved.)
- *Document your program.* Tips for documenting your program are given in the manual *How to Use HP VEE*. Also, HP VEE provides the **veedoc** utility to extract information from a program.

The best source of HP VEE training for the end user is the manual *Getting Started with HP VEE*. In addition, you may want to write a short manual for the end user of your HP VEE program.

#### NOTE

Here are some other things to consider when developing your program:

- If your program has no panel view, it will still run under HP VEE RunOnly, but with a blank screen. (However, **Show Panel on Execute** pop-up **UserObjects** will still appear.)
- You cannot **Step** your program in HP VEE RunOnly.
- Breakpoints saved with your program will be ignored when running under HP VEE RunOnly.

**References:**

For further information about developing programs with HP VEE, refer to the following manuals:

- *Getting Started with HP VEE*
- *How to Use HP VEE*
- *Building an Operator Interface with HP VEE*
- *HP VEE Reference*
- *HP VEE Advanced Programming Techniques*

These manuals are included with the HP VEE product, but not with HP VEE RunOnly.